

The 3220F

3,220 Sq. Ft. | 4 Beds | 4.5 Baths | 3 Car Garage

Southern Hills

Exterior Options:



3220F E1



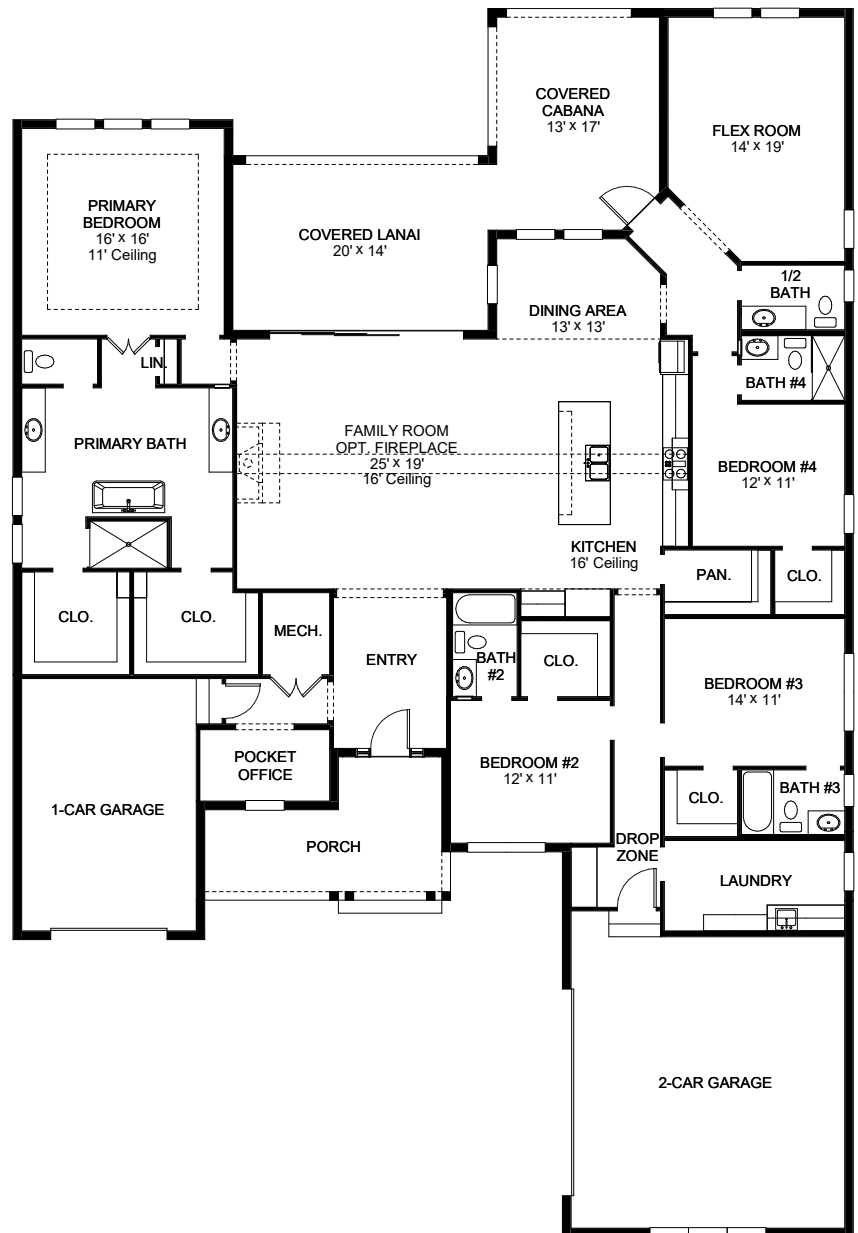
3220F E2



3220F E3

The 3220F

The covered front porch opens into a welcoming entryway. In the family room, a 16-foot ceiling creates an airy feel, while a sliding glass door leads to the covered lanai and backyard. The kitchen, connected by an island with built-in seating, features ample counter space and an oversized walk-in pantry.



Scan to take a
360 virtual tour